



K38-CP

Marine Generator Sets

Specifications

Engine Model	Cummins KTA38-D(M1)
Alternator	Newage PM734B
AVR Type	MX321
Operating Fuel	#2 Diesel, MGO
Agency Approvals	ABS, BV, DNV, GL, LR
Emissions	IMO Tier I



Dimensions

Length	4500 mm	177 in
Width	1900 mm	74 in
Height	2100 mm	82 in
Weight	8200 kg	18078 lb

Dimensions and weight may vary based on selected engine configuration

Ratings

Model	Power* @ RPM	kV-A @ 0.8 pf	Frequency	Voltage	Fuel Consumption	
					Rated Speed L/hr (gal/hr)	ISO** L/hr (gal/hr)
K38-CP	764 kWe @ 1500	955	50 Hz	380	206.0 (54.4)	104.1 (27.5)
K38-CP	804 kWe @ 1500	1005	50 Hz	400	206.0 (54.4)	104.1 (27.5)
K38-CP	832 kWe @ 1500	1040	50 Hz	415	206.0 (54.4)	104.1 (27.5)
K38-CP	845 kWe @ 1500	1056	50 Hz	440	206.0 (54.4)	104.1 (27.5)
K38-CP	888 kWe @ 1800	1110	60 Hz	416	226.7 (59.9)	122.2 (32.3)
K38-CP	920 kWe @ 1800	1150	60 Hz	440, 460, 480	226.7 (59.9)	122.2 (32.3)

* kWe reflects the approximate amount of power available when used in a keel cooled genset configuration

** Average fuel consumption based on ISO 8178 E3 Standard Test Cycle (variable speed models) and ISO 8178 D2 Standard Test Cycle (fixed speed models)

The Right Technology. **Matters.**

K38-CP

C Power Design Features

- World-class Cummins diesel engines matched to industry-leading Cummins alternators. Designed, integrated and assembled for optimal efficiency and performance
- Engineered for the tough demands of the marine environment with superior durability and high uptime requirements
- Simplified vessel integration with less complex mechanical connections
- Available with multi-station alarm and monitoring panels via a local digital network to match application requirements
- Integrated alarm system can be configured to communicate with ship's central data systems
- Flexible configurations available to customize the generating set to the vessel's operation requirements
- Comprehensive warranty applies to entire generating set and is valid globally

Engine Features

- Rugged V-12 cylinder turbocharged diesel engine with electronically governed fuel system provides excellent fuel economy and low maintenance requirements. Optional hydraulic backup speed governor
- Available in heat exchanger or keel cooled configurations
- Conforms to SOLAS surface temperature

requirements and classifiable for Unmanned Machinery Space (UMS) applications as defined by IACS society rules

- IMO emissions certified by Lloyd's Register; Classification Society type approvals available
- Classed level units fitted with superior aluminum extruded wiring harness, duplex filtration and type-approved hardware

Alternator Features

- 6 wire, 3-phase alternator provides a broad range of re-connectable outputs
- Designed specifically for marine applications with an IP23 rating
- Single bearing close coupled permanent magnet generator provides constant excitation under all conditions
- Standard 2/3 pitch windings avoid excessive neutral currents
- Classifiable for Unmanned Machinery Space (UMS) applications as defined by IACS society rules
- Dynamically balanced rotors with sealed-for-life ball bearings
- Integrated anti-condensation heaters and two sets of RTDs



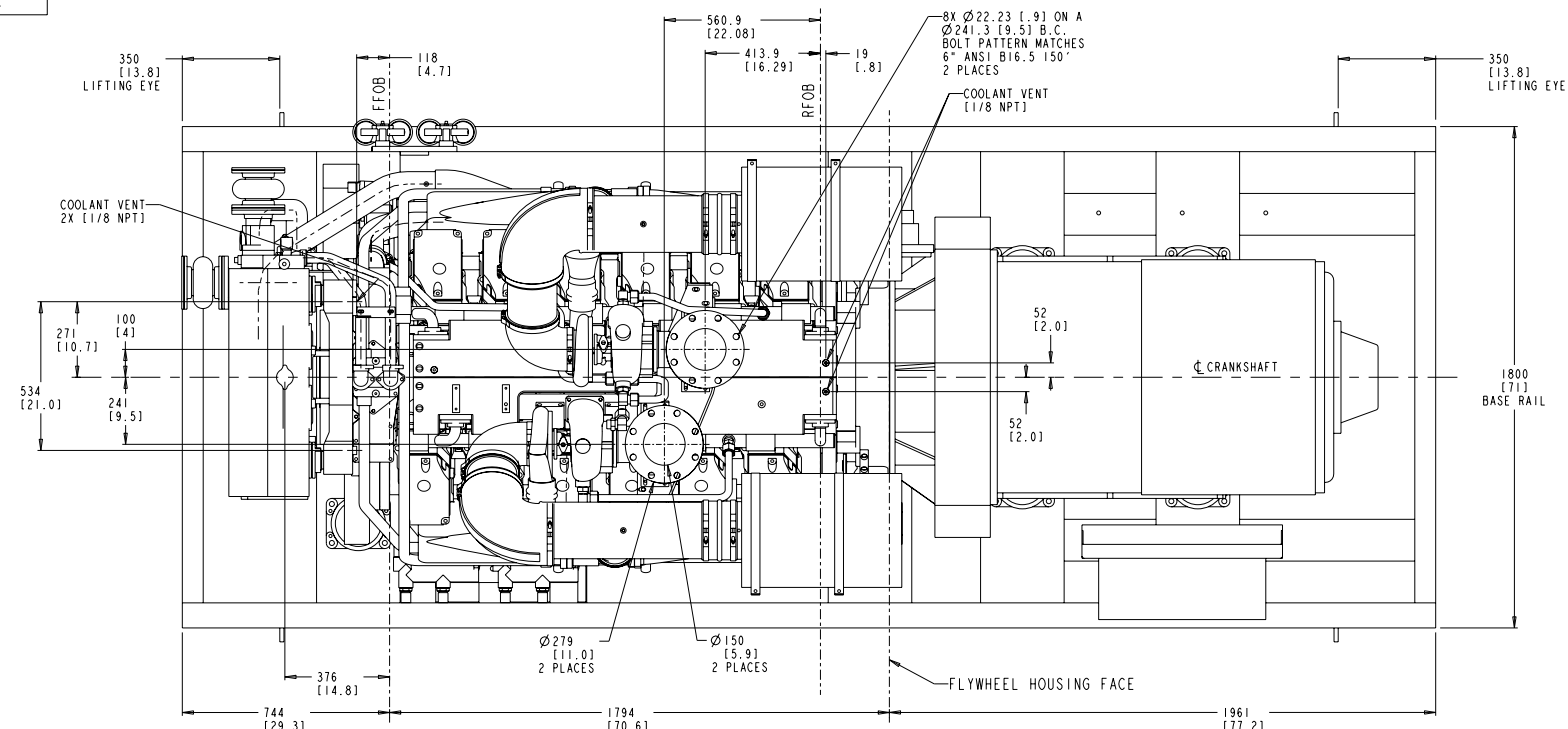
Cummins Inc.
4500 Leeds Avenue - Suite 301
Charleston, SC 29405-8539
U.S.A.

Internet: marine.cummins.com
Email: wave.master@cummins.com

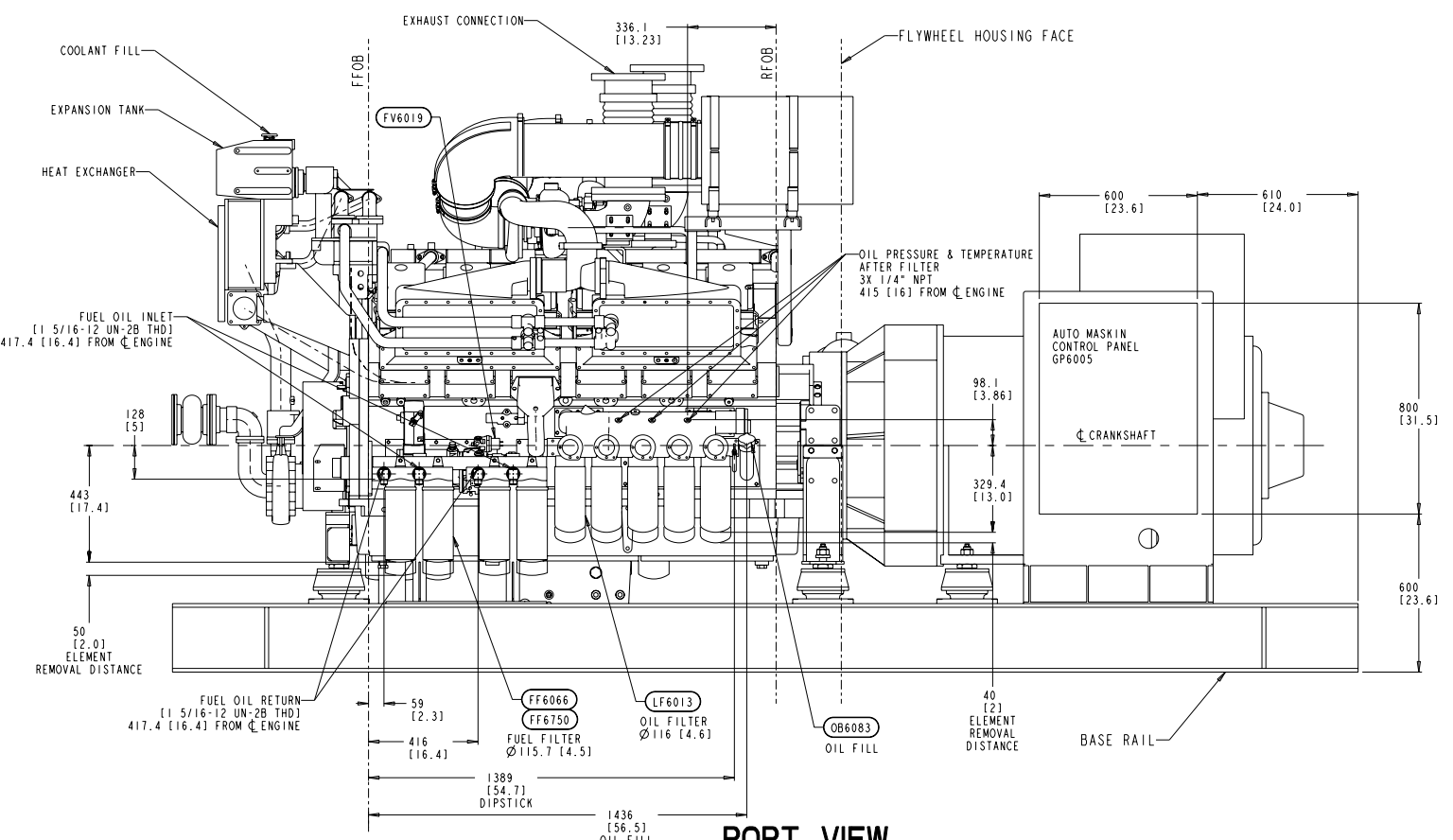
Bulletin M10071 Printed in U.S.A. REV 11/10
©2010 Cummins Inc.

ITEM NUMBER
3170714

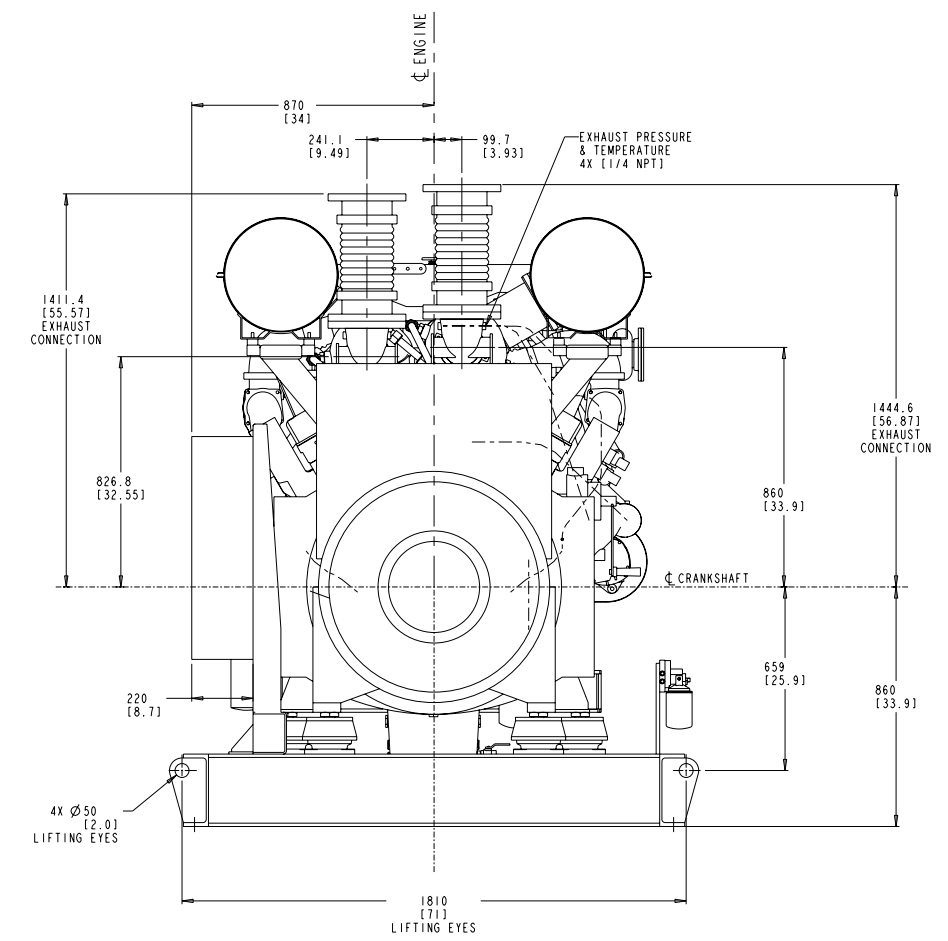
REVISIONS			
ZONE	REV	DESCRIPTION	APP'D
00	RELEASED		



TOP VIEW

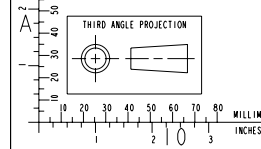


PORT VIEW



REAR VIEW

PRODUCT GRAPHICS FILE
NO ORIGINAL DRAWING EXISTS FOR THIS ITEM. THE ENGINEERING GRAPHICS DATA FOR THIS ITEM RESIDES IN THE PRODUCT GRAPHICS FILE AND IS CONTROLLED BY THE AGENCY DESIGNATED AS HAVING ITEM CONTROL.

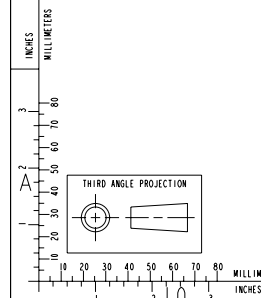
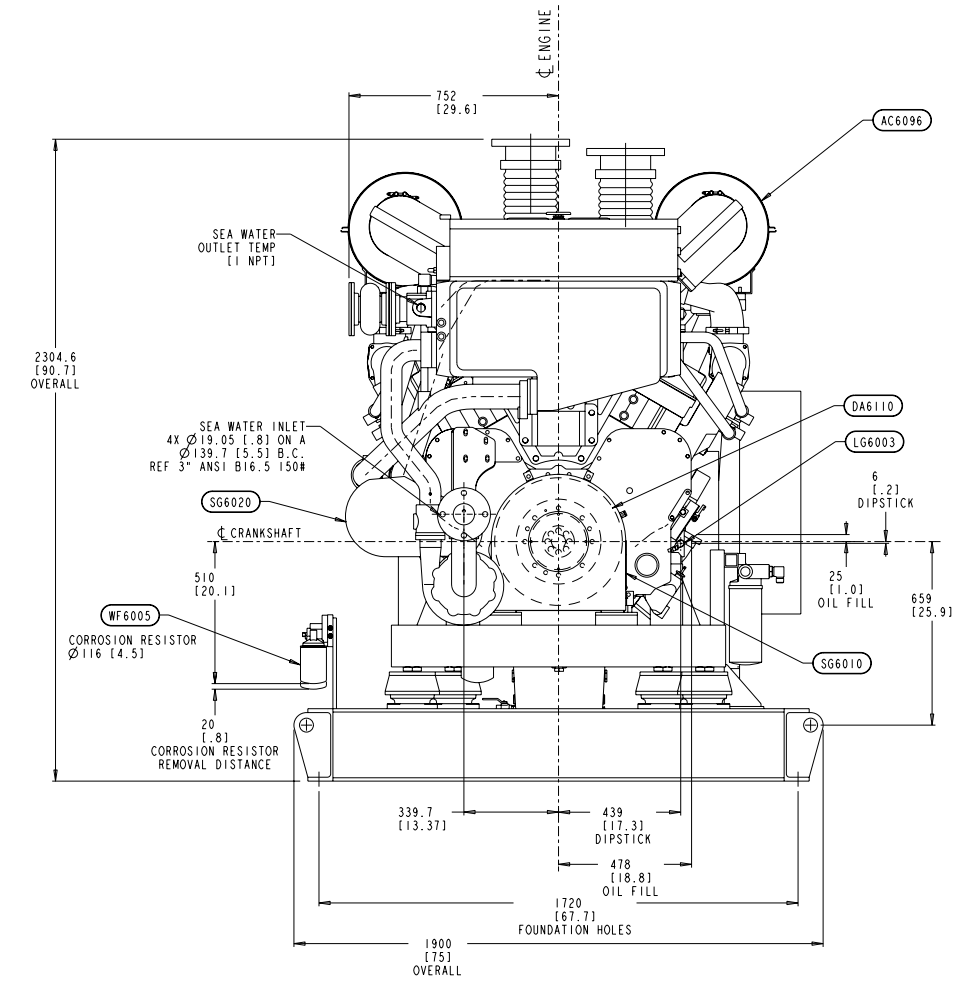
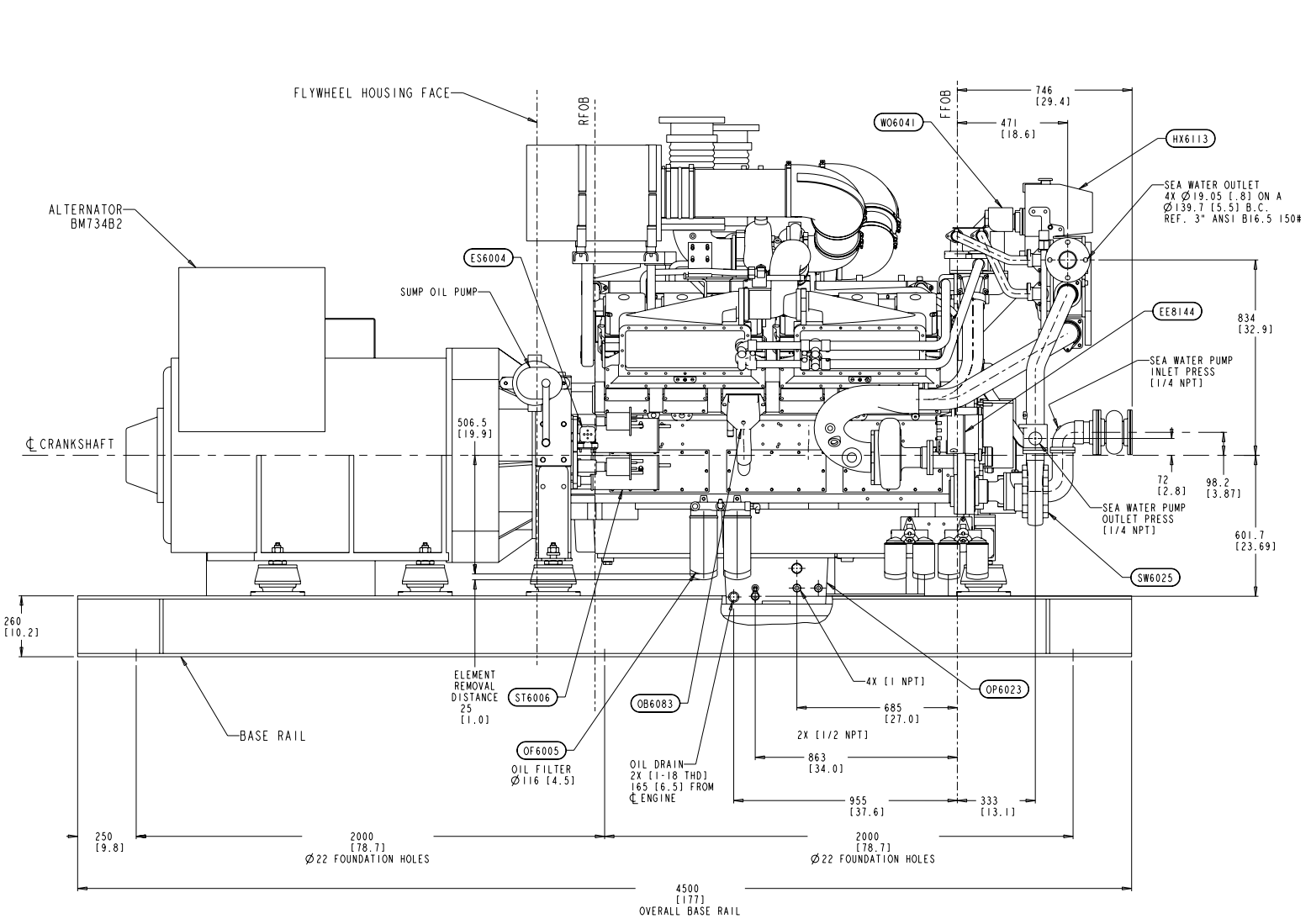


DO NOT SCALE THIS DRAWING
THIS DRAWING/DATA FILE (AND THE INFORMATION SHOWN THEREON) IS CONFIDENTIAL AND PROPRIETARY AND SHALL NOT BE USED, DISCLOSED TO OTHERS, OR REPRODUCED BY ANY MEANS FOR ANY PURPOSE IN HARD COPY FORM OR IN MACHINE READABLE FILES, WITHOUT WRITTEN CONSENT OF CUMMINS INC., MARKETING CAD SERVICES DEPARTMENT.

LAST SECTION LETTER USED: NA	REF. DRAWING STANDARDS: ANSI Y14.5M ISO 81101	ITEM NAME LIGHTHOUSE 920 - HX
UNLESS OTHERWISE SPECIFIED DIMENSIONS ARE IN: MM 1.7 ARE IN: IN	IDENTIFIER J	SIZE CODE (IDENT. NO.) 3170714
DWN: D. SOMIN CHK: UNCHECKED APPD:	SCALE: 1:125	ITEM CONTROL: MCS
		SHEET 1 OF 2

ITEM NUMBER
3170714

REVISIONS			
ZONE	REV	DESCRIPTION	APP'D
00	RELEASED		

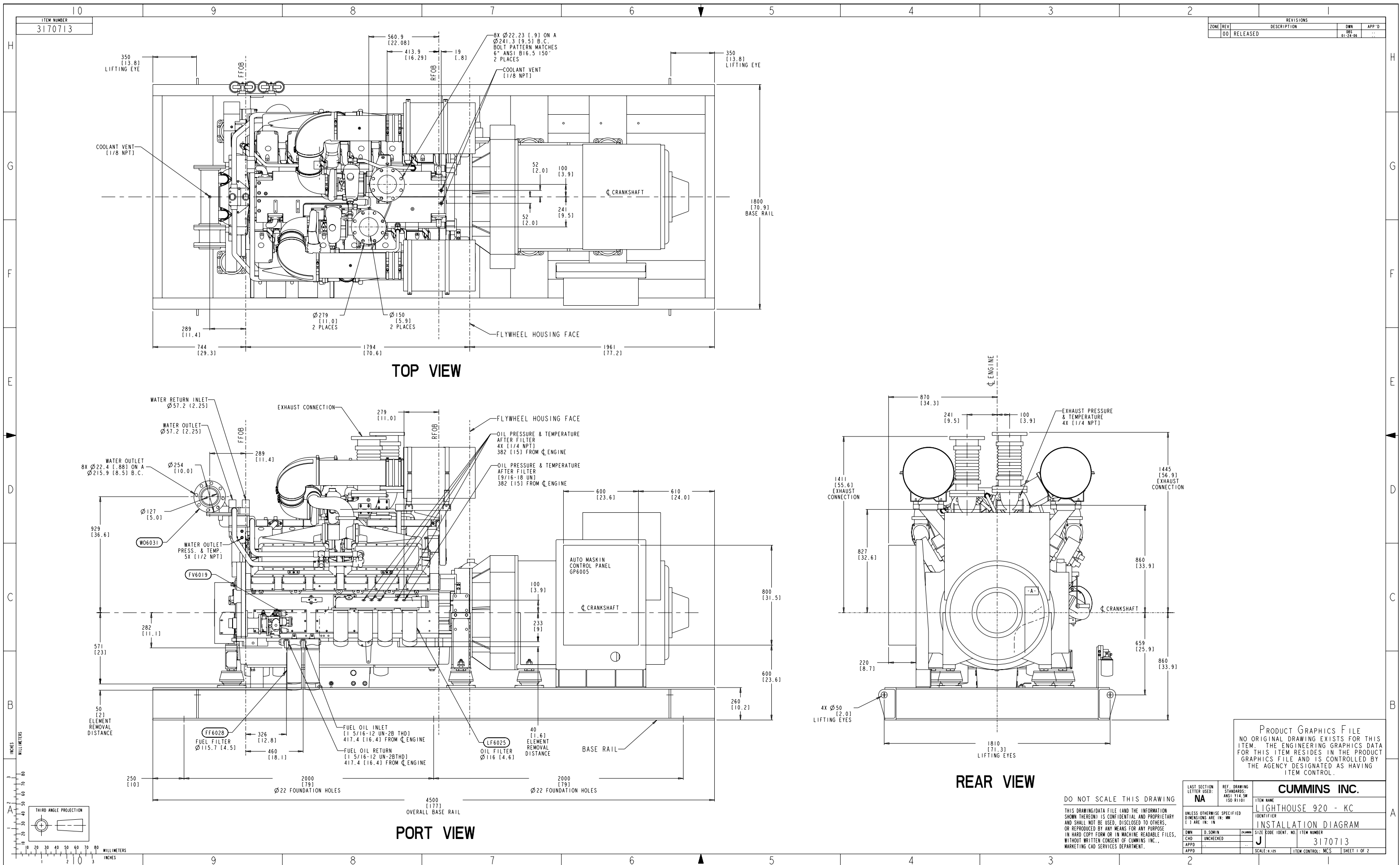


DO NOT SCALE THIS DRAWING

THIS DRAWING/DATA FILE (AND THE INFORMATION SHOWN THEREON) IS CONFIDENTIAL AND PROPRIETARY AND SHALL NOT BE USED, DISCLOSED TO OTHERS, OR REPRODUCED BY ANY MEANS FOR ANY PURPOSE IN HARD COPY FORM OR IN MACHINE READABLE FILES, WITHOUT WRITTEN CONSENT OF CUMMINS INC., MARKETING CAD SERVICES DEPARTMENT.

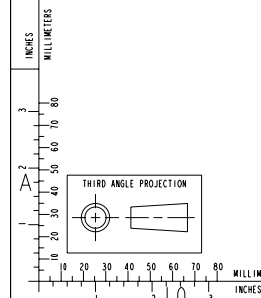
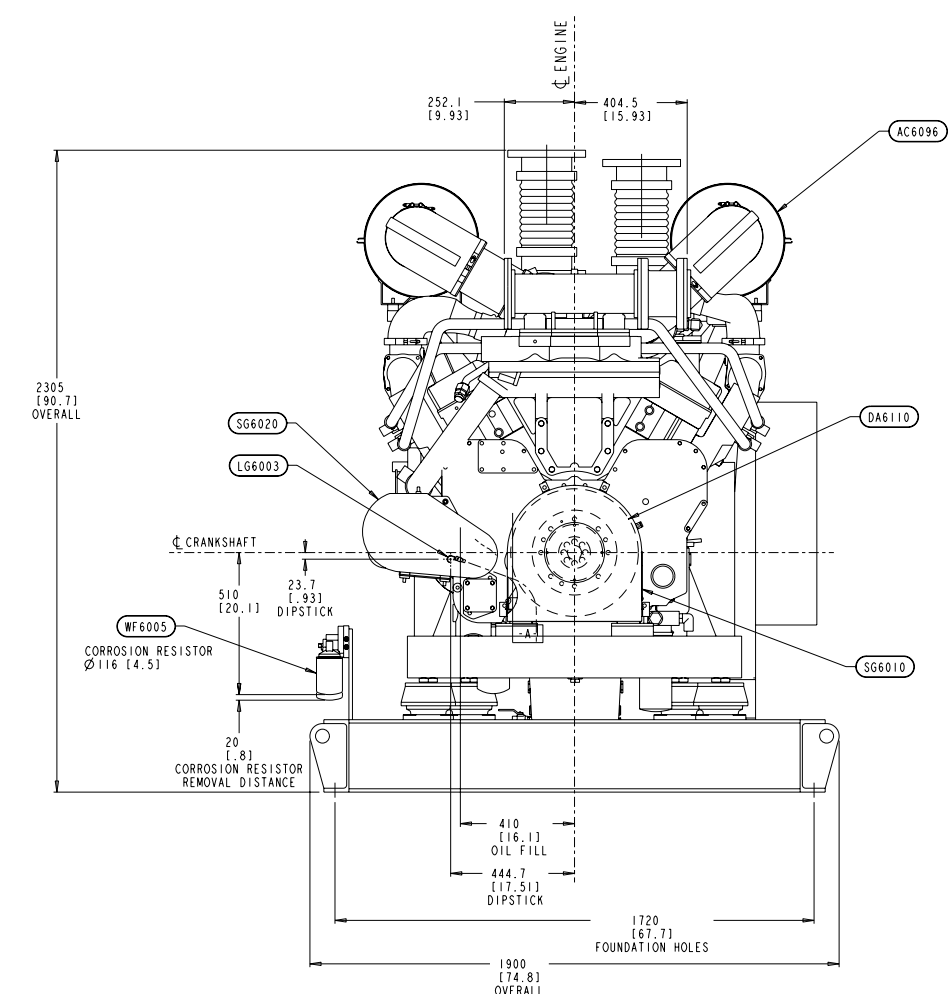
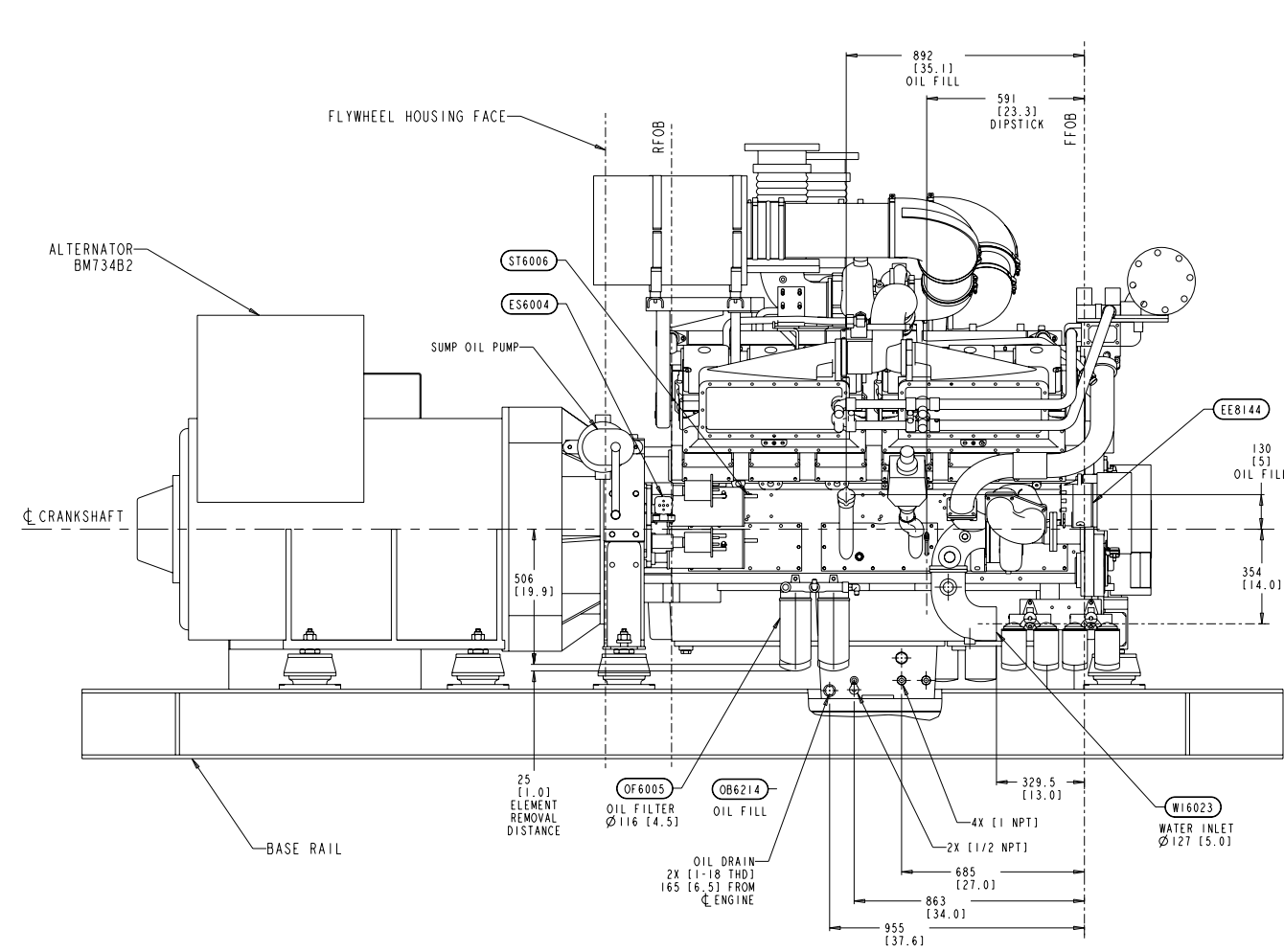
PRODUCT GRAPHICS FILE
NO ORIGINAL DRAWING EXISTS FOR THIS ITEM. THE ENGINEERING GRAPHICS DATA FOR THIS ITEM RESIDES IN THE PRODUCT GRAPHICS FILE AND IS CONTROLLED BY THE AGENCY DESIGNATED AS HAVING ITEM CONTROL.

LAST SECTION LETTER USED: NA	REF. DRAWING STANDARDS: ANSI Y14.5M ISO 81101	CUMMINS INC.	
UNLESS OTHERWISE SPECIFIED DIMENSIONS ARE IN: MM () ARE IN: IN		ITEM NAME LIGHTHOUSE 920 - HX	IDENTIFIER
DWN: D. SOMIN	CHKD: UNCHECKED	SIZE CODE IDENT. NO.	ITEM NUMBER
APPD:	APPD:	J	3170714
		SCALE: 1:125	ITEM CONTROL: MCS SHEET 2 OF 2



ITEM NUMBER
3170713

REVISIONS			
ZONE	REV	DESCRIPTION	APP'D
00	RELEASED		



PRODUCT GRAPHICS FILE
NO ORIGINAL DRAWING EXISTS FOR THIS ITEM. THE ENGINEERING GRAPHICS DATA FOR THIS ITEM RESIDES IN THE PRODUCT GRAPHICS FILE AND IS CONTROLLED BY THE AGENCY DESIGNATED AS HAVING ITEM CONTROL.

DO NOT SCALE THIS DRAWING
THIS DRAWING/DATA FILE (AND THE INFORMATION SHOWN THEREON) IS CONFIDENTIAL AND PROPRIETARY AND SHALL NOT BE USED, DISCLOSED TO OTHERS, OR REPRODUCED BY ANY MEANS FOR ANY PURPOSE IN HARD COPY FORM OR IN MACHINE READABLE FILES, WITHOUT WRITTEN CONSENT OF CUMMINS INC., MARKETING CAD SERVICES DEPARTMENT.

LAST SECTION LETTER USED: NA	REF. DRAWING STANDARDS: ANSI Y14.5M ISO 81101	CUMMINS INC.	
UNLESS OTHERWISE SPECIFIED DIMENSIONS ARE IN: MM 1.7 ARE IN: IN	ITEM NAME LIGHTHOUSE 920 - KC	IDENTIFIER J	ITEM NUMBER 3170713
DWN: D. SOMIN CHD: UNCHECKED APPD:	SCALE: 0.125	ITEM CONTROL: MCS	SHEET 2 OF 2